

# Some Basic Grounds

An empty musical staff with a treble clef, a key signature of one sharp (F#), and a common time signature (C). It features two repeat signs with first and second endings.

## Bergamasca

Musical notation for Bergamasca in bass clef, common time, and one sharp key signature. The melody consists of quarter notes and half notes. A double bar line with repeat signs is placed after the first measure. The second ending consists of four quarter notes, with the last two marked with a sharp sign (#).

An empty musical staff with a treble clef, a key signature of one sharp (F#), and a common time signature (C). It features two repeat signs with first and second endings.

## Spanish Passacalles

Musical notation for Spanish Passacalles in bass clef, 3/4 time, and one flat key signature (Bb). The melody consists of quarter notes and half notes. A double bar line with repeat signs is placed after the first measure. The second ending consists of four quarter notes, with the first marked with a flat (b) and the last with a sharp (#).

An empty musical staff with a treble clef, a key signature of one sharp (F#), and a common time signature (C). It features two repeat signs with first and second endings.

## Basic Passacaglia

Musical notation for Basic Passacaglia in bass clef, 3/4 time, and one sharp key signature (F#). The melody consists of quarter notes and half notes. A double bar line with repeat signs is placed after the first measure. The second ending consists of four quarter notes, with the first marked with a flat (b) and the last with a sharp (#). Fingerings 6, #6, 6, 6, and # are indicated below the notes.

An empty musical staff with a treble clef, a key signature of one sharp (F#), and a common time signature (C). It features two repeat signs with first and second endings.

## Ciaccona

Musical notation for Ciaccona in bass clef, 3/4 time, and one sharp key signature (F#). The melody consists of quarter notes and half notes. A double bar line with repeat signs is placed after the first measure. The second ending consists of four quarter notes, with the first and last marked with a sharp (#) and the second and third with a 6.

An empty musical staff with a treble clef, a key signature of one sharp (F#), and a common time signature (C). It features two repeat signs with first and second endings.

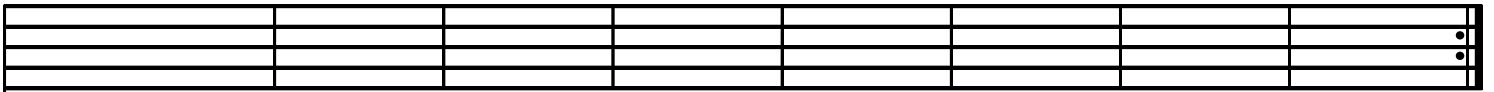
## Ruggiero

Musical notation for Ruggiero in bass clef, common time, and one sharp key signature (F#). The melody consists of quarter notes and half notes. A double bar line with repeat signs is placed after the first measure. The second ending consists of four quarter notes, with the first marked with a sharp (#) and the last with a #6.

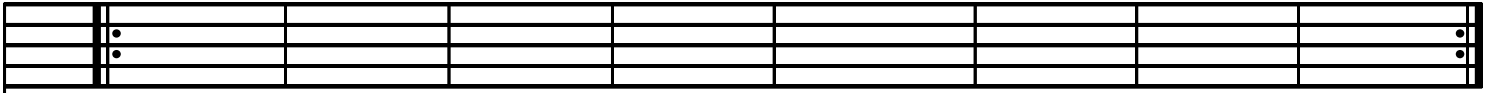
An empty musical staff with a treble clef, a key signature of one sharp (F#), and a common time signature (C). It features two repeat signs with first and second endings.

## Paradetas

Musical notation for Paradetas in bass clef, common time, and one sharp key signature (F#). The melody consists of quarter notes and half notes. A double bar line with repeat signs is placed after the first measure. The second ending consists of four quarter notes, with the last marked with a sharp (#).



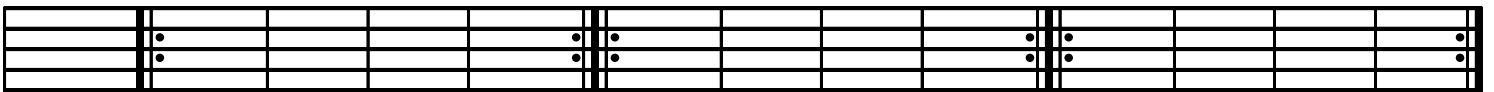
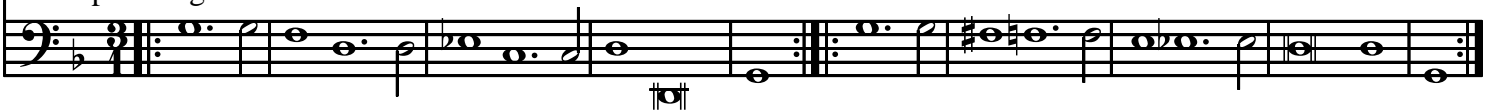
Long' passacaglia



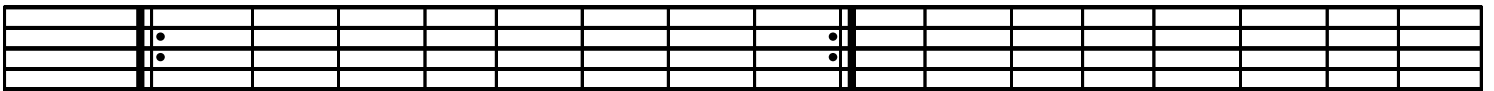
Octave' or 'double' passacaglia



Other passacaglia



Spagnoletta



Basic Romanesca



Extended Romanesca

